

PRODUCT CATALOG

2013/14

Grow together
with us...





**good
quality**
- reasonable price

our goal is
**your
satisfaction**

i-dental is a family owned company. Because of the fact that we are not a large company but company managed by the owner, our customers have a benefit: this increase communication both internally and with our customers. The fact that we export to more than 60 countries regularly proves that.

The ability to use market knowledge to create new products is one of i-dental core competencies. Our understanding of our markets and our customers needs makes it possible to transform expertise into products that give our customers real value and make them a success. By having our finger on the pulse we know the market's present and future needs. By working closely with our customers, we develop solutions that last.

Your input is our most valuable component. Helping you achieve business success is our number one goal.

i-dental, manufacturer of innovative dental products is synonym of good quality and price ratio. Founded in 1992, i-dental is only one 100% manufacturer and ISO/CE certified company in Baltic countries and one of the leading companies in Eastern Europe. i-dental is very fast growing company and even in time of global economic crisis our company had significant growth of the sales.

We strive to achieve "optimal quality" – a quality that greatly exceeds market expectations, but is always relevant and worth paying for. We have a full range of innovative production facilities to ensure our consistent high quality.

Our production apparatus is complete and we master all the work processes, including testing and packaging. Quality assurance has top priority in our company and is integral part of each stage in the manufacture process. This ensures consistent high quality, full control and an overview of the entire process.

Our quality management system complies with the requirements of international standards ISO 9001 and ISO 13485 and was approved by Notified Body in accordance to the Council Directive 93/42/EEC concerning medical devices.

we would like to
**thank
you**^{all}

We are excited about the future of our small country, our i-dental company and our friends all over the world. We can assure you that we will continue to keep you at the cutting edge of dentistry in the years to come.



Contents

Composites 2

i-XCITE LC	2
i-LIGHT	3
i-FLOW	4
i-LINER	4
i-XCITE CC	5

Adhesives 6

i-BONDING LC	6
i-BONDING CC	6

Sealants 7

i-SEAL LC	7
-----------	---

Glass Ionomer Cements 8

i-FIL	8
i-BAS	8
i-SIL	9
i-FIX	9
i-FIL LC	10
i-FIX Plus	11

Other Cements 12

i-PAC	12
i-POL	12
i-ZOE	13

Root Canal Materials 14

i-CAL	14
i-CAL Plus	14
Formocresol	14
i-ENDO	15
Camphenol	15
Camphenol Plus	15
i-EDTA	16
Citric Acid	17
i-TIPS	17
i-CLEAN	18
Zinc Oxide	18
Calcium Hydroxide	18
Eugenol	19
Sodium Hypochlorite	19

Temporary Materials 20

i-PRO	20
i-PRO LC	20
i-DEVIT	20

Etchants 21

i-GEL	21
-------	----

Caries Prevention Materials 22

Fluoride Solution	22
i-FLOR	22

Prophy Materials 23

i-FASTE	23
Brushes and Cups	24
i-TOPICAL	24

Retraction Materials 25

Hemostatic Solution	25
i-PAK Ultra	26

Miscellaneous 28

i-OIL	28
Mixing Pads	28
Cotton Rolls	28
Disposable Micro Applicators	29

Tooth Whitening 30

i-SMILE	30
Vinyl Sheets	30
i-BLOCK	31

Acrylics: dentures 32

i-PLAST HC	32
i-PLAST CC	32
i-PLAST CA	32
i-PLAST OR	33
i-PLAST IM	33
Isolating Solution For Models	34
i-SEP	34

Acrylics: C&B 35

i-CAB	35
i-RED	35
i-TEMP	36
Pumice	36

Acrylic Teeth 37

i-DENT	37
--------	----

Plasters 38

i-STONE II	38
i-STONE ORTO	38
i-STONE III	38
i-STONE IV	39
i-STONE ROCK	39
i-STONE EXTRA	39

Investments 40

i-VEST E	40
i-VEST N	40



Indications:

- Fillings in Black's class I, II, III, IV and V cavities
- Inlays, onlays and laminate veneers
- Cores, splinting loose teeth
- Fissure sealing in molars and premolars

Advantages:

- Extremely homogeneous
- Highly resistant
- Easily handled
- Excellent biocompatibility
- Economical
- Nano filler
- Radiopaque



Packaging:

IXTA1	4g syringe dentin shade A1
IXTA2	4g syringe dentin shade A2
IXTA3	4g syringe dentin shade A3
IXTA35	4g syringe dentin shade A3.5
IXTB2	4g syringe dentin shade B2
IXTC2	4g syringe dentin shade C2
IXTO2	4g syringe dentin shade OA2
IXTO3	4g syringe dentin shade OA3
IXTEU	4g syringe enamel shade Universal
IXTK1	4x4g syringes (A1, A2, A3, A3.5)*
	5ml adhesive
	5ml etching liquid
	accessories
IXTK2	8x4g syringes (A1, A2, A3, A3.5, B2, C2, OA2, OA3)*
	5ml adhesive
	4.3g etching gel
	syringe stand, accessories

*Other shades under request

Composites

i-LIGHT

LIGHT CURING NANO HYBRID COMPOSITE

Indications:

- Fillings in Black's class I, II, III, IV and V cavities
- Inlays, onlays and laminate veneers
- Cores, splinting loose teeth
- Fissure sealing in molars and premolars

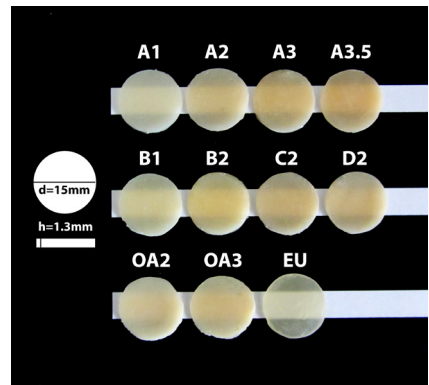
Advantages:

- Extremely homogeneous and highly polishable
- High aesthetic and durable
- Lasting shades
- Highly resistant
- Easily handled
- Excellent biocompatibility
- Ultra small particle size
- Nano filler
- Radiopaque



Packaging:

ILCA1	4g syringe dentin shade A1
ILCA2	4g syringe dentin shade A2
ILCA3	4g syringe dentin shade A3
ILCA5	4g syringe dentin shade A3.5
ILCB2	4g syringe dentin shade B2
ILCC2	4g syringe dentin shade C2
ILCO2	4g syringe dentin shade OA2
ILCO3	4g syringe dentin shade OA3
ILCEU	4g syringe enamel shade Universal
ILCK1	8x4g syringes (A1, A2, A3, A3.5, B2, C2, OA2, OA3)*
	5ml adhesive
	4,3g etching gel
	syringe stand, accessories
ILCK2	4x4g syringes (A1, A2, A3, A3.5)*
	5ml adhesive
	4,3g etching gel
	syringe stand, accessories



*Other shades under request

Composites

i-FLOW

LIGHT CURING NANO FLOWABLE COMPOSITE



Indications:

- Fillings in class III and V cavities
- Fillings in class IV small cavities
- Repairing small defects
- Fillings difficult areas
- Pits and fissure sealings
- Root surfaces caries
- Initial placement in I and II cavities

Advantages:

- Excellent flow characteristics
- High aesthetic
- Highly resistant
- Highly polishable
- Low shrinkage
- Nano filler
- Radiopaque

Packaging:

IFTA1	2g syringe A1, 3 tips
IFLA1	5g syringe A1, 5 tips
IFTA2	2g syringe A2, 3 tips
IFLA2	5g syringe A2, 5 tips
IFTA3	2g syringe A3, 3 tips
IFLA3	5g syringe A3, 5 tips
IFTA35	2g syringe A3.5, 3 tips
IFLA35	5g syringe A3.5, 5 tips
IFTK1	4x2g syringes, 10 tips

Other shades under request



i-LINER

LIGHT CURING COMPOMER LINER

Indications:

- Linings for composites, amalgams and porcelain restorations

Packaging:

ILITP	1,5g syringe
	5 tips
ILIKP	2,5g syringe
	5 tips
ILIK1	4x2,5g syringes
	20 tips

Composites

Advantages:

- Compensates filling shrinkage
- Prevents crack formations
- Minimizes micro fractures and secondary caries
- Provides long-term fluoride release
- Has antibacterial properties
- Material contents glass ionomer, this guarantee double adhesion to dentine
- Radiopaque



i-XCITE CC

CHEMICAL CURING COMPOSITE

Indications:

- Fillings in class III and V cavities
- Selected fillings in class IV cavities
- Limited use in class I cavities in premolars

Advantages:

- Radiopaque
- Universal shade
- Non sticky
- Quick setting
- Highly resistant



Packaging:

IXCCK	7g catalyst paste
	7g base paste
	3ml adhesive catalyst
	3ml adhesive base
	3ml etching liquid
	5 spatulas, 1 mixing pad
IXCCP	15g catalyst paste
	15g base paste
	3ml adhesive catalyst
	3ml adhesive base
	5ml etching liquid
	10 spatulas, 2 mixing pads

IXCCC	30g catalyst paste
	30g base paste
	5ml adhesive catalyst
	5ml adhesive base
	10ml etching liquid
	20 spatulas, 2 mixing pads



Adhesives

i-BONDING LC

LIGHT CURING ADHESIVE



Packaging:

IBLTP	5ml bottle
	5 micro applicators
	cup for application

Indications:

- Total-etch adhesive
- For use on dentine and enamel surfaces
- On amalgam and ceramic surfaces
- On treated metals
- For composites and compomers

Advantages:

- Simple to use
- For universal application
- Good wetting properties

i-BONDING CC

CHEMICAL CURING ADHESIVE

Indications:

- For use on dentine and enamel surfaces
- For chemical curing composites and cements

Advantages:

- High bond strength
- Bis-GMA based adhesive

Packaging:



IBCTP	3ml adhesive catalyst
	3ml adhesive base
IBCCP	5ml adhesive catalyst
	5ml adhesive base

Sealants

i-SEAL LC

LIGHT CURING PIT AND FISSURE SEALANT

Indications:

- For sealing small pits
- For sealing small fissures

Advantages:

- Simple to use
- Excellent penetration
- Highly flowable

Packaging:

ISEKP	3,8g syringe
	3 tips
ISETP	5g bottle
ISEK1	4x3,8g syringes
	12 tips



i-FIL

GLASS IONOMER FILLING CEMENT



Indications:

- Fillings in class III and V cavities
- Pit and fissure sealings
- Primary teeth fillings

Advantages:

- Quick setting
- VITA* shades
- High aesthetic
- Excellent thermal expansion and translucency

Packaging:

IFITP	10g powder A2
	10g powder A3
	6g liquid
	measuring scoop
IFIA2	2x10g powder A2
	6g liquid
	measuring scoop
IFIA3	2x10g powder A3
	6g liquid
	measuring scoop

* Registered trademark of the Vita Zahnfabrik H.Rauter GmbH & Co.KG, Bad Sackingen, Germany

i-BAS

GLASS IONOMER BASE LINING CEMENT



Indications:

- Base linings under composites
- Base linings under amalgams
- Core build-ups

Packaging:

IBATP	20g powder yellow
	10g liquid
	measuring scoop

Advantages:

- Quick setting
- Radiopaque
- High strength and hardness
- Excellent thermal expansion

Glass Ionomer Cements

i-SIL

SILVER-GLASS IONOMER CEMENT

Indications:

- Fillings in class I and II cavities
- Base under posterior composite restorations
- Base under amalgams
- Core build-ups
- Crowns and amalgams repairs
- Primary teeth fillings

Advantages:

- Quick setting
- Radiopaque
- High strength and hardness
- Excellent thermal expansion



Packaging:

ISITP	10g powder grey
	3g liquid
	measuring scoop

i-FIX

GLASS IONOMER LUTING CEMENT

Indications:

- Cementation of crowns and bridges
- Cementation of inlays and onlays
- Cementation of orthodontic brackets and bands

Advantages:

- Quick setting
- High adhesion
- Low film thickness
- Good translucency
- Excellent biocompatibility
- Excellent thermal expansion



Packaging:

IIXTP	20g powder yellow
	13g liquid
	measuring scoop



Indications:

- For deciduous teeth fillings
- Restoration of class V/cervical lesions and small single surface class I and II cavities in adult teeth
- Glass ionomer/composite "sandwich" restorations
- Atraumatic restorative treatment or minimally invasive procedures
- Situations where cariostatic activity is required

Advantages:

- Dual (light and chemical) curing
- Resin reinforced
- Easily mixable
- Radiopaque
- Very high compressive, flexural and shear bond strengths
- Contains and releases fluoride ions
- HEMA free formulation allows decrease allergic reactions
- VITA* shades

Packaging:

IFILA2	10g powder A2
	4g liquid
	measuring scoop
	mixing pad
IFILA3	10g powder A3
	4g liquid
	measuring scoop
	mixing pad

* Registered trademark of the Vita Zahnfabrik H.Rauter GmbH & Co.KG, Bad Sackingen, Germany



Glass Ionomer Cements

i-FIX Plus

RESIN MODIFIED GLASS IONOMER LUTING CEMENT

Indications:

- Cementation of all metal, ceramic, porcelain and resin crowns, bridges, inlays, onlays
- Cementation of metal and ceramic orthodontic brackets



Advantages:

- Resin modified
- Radiopaque
- Very high adhesion to dentin, enamel and alloys
- Contains and releases fluoride ions
- Has low film thickness and good aesthetic
- Available in one universal shade

Packaging:

IIXPP	20g powder
	2x6.5g liquid
	measuring scoop
	mixing pad



i-PAC

ZINC PHOSPHATE CEMENT

Indications:

- Linings under composites
- Linings under amalgams
- Temporary fillings
- Cementation of crowns and bridges
- Cementation of inlays and onlays
- Cementation of orthodontic brackets and bands



Advantages:

- High adhesion
- Quick setting

Packaging:

IPATP	50g powder white
	30g liquid
	measuring scoop

i-POL

ZINC POLYCARBOXYLATE CEMENT



Indications:

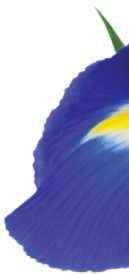
- Linings under composites
- Linings under amalgams
- Linings under glass ionomers
- Temporary fillings
- Cementation of crowns and bridges
- Cementation of inlays and onlays
- Cementation of orthodontic brackets and bands

Packaging:

IPOTP	50g powder white-yellow
	25g liquid
	measuring scoop

Advantages:

- High adhesion
- Fluoride release
- Radiopaque



Other Cements

i-ZOE

RESIN MODIFIED ZINC OXIDE EUGENOL CEMENT

Indications:

- Base linings under amalgams
- Base linings under glass ionomers
- Temporary fillings

Advantages:

- High strength
- Quick setting
- Resin modified



Packaging:

ICEKP	20g powder universal
	6g liquid
	measuring scoop
ICETP	40g powder universal
	12g liquid
	measuring scoop



Root Canal Materials

i-CAL

CALCIUM HYDROXIDE PASTE



Packaging:

ICPTP	3g syringe + 5 tips
ICPK1	4x3g syringes + 20 tips

Indications:

- Pulp sealings
- Temporary root canal fillings

Advantages:

- Radiopaque
- High pH value
- Water based

i-CAL Plus

CALCIUM HYDROXIDE PASTE WITH IODOFORM



Packaging:

ICITP	3g syringe + 5 tips
ICIK1	4x3g syringes + 20 tips

Indications:

- Pulp sealings
- Temporary root canal fillings

Advantages:

- Radiopaque
- High pH value
- Silicone oil based
- Antibacterial and bacteriostatic
- Stimulates hard tissue formation
- Promotes apexification and apexogenesis

Formocresol

ROOT CANAL DISINFECTION SOLUTION



Packaging:

CH040	20ml
-------	------

Indications:

- Treatment of severely infected root canals
- Effective pulp devitaliser and disinfectant
- Root canal dressing

Advantages:

- Strong antibacterial properties make it efficient in vital pulpotomy
- Effective in treatment of severely infected root canals

Root Canal Materials

i-ENDO

ROOT CANAL FILLING MATERIAL BASED ON ZINC OXIDE AND EUGENOL

Indications:

- Permanent root canal sealer

Advantages:

- Radiopaque
- Easy to insert in the canal



Packaging:

IEOK1	15g powder
	10ml liquid

Camphenol

ROOT CANAL DISINFECTION SOLUTION

Indications:

- Disinfection of the dentine after cavity preparation
- Disinfection after pulpectomy and pulp dressing
- Treatment of post traumatic inflammation
- Root canal disinfection

Advantages:

- Actively disinfects infected root canals
- Effectively cures periapical infections
- Oily composition helps it remain active for long period



Packaging:

CH010	20ml
-------	------

Camphenol Plus

ROOT CANAL DISINFECTION SOLUTION

Indications:

- Root canal disinfection

Advantages:

- Disinfect the root canal with a powerful bactericide: parachlorophenol
- Contains dexamethasone for its anti-inflammatory properties
- With thymol and camphor for their antiseptic properties
- Ensures sterility of endodontic spaces during vital pulpectomies
- May be used for sterilising deep cavities



Packaging:

CH050	20ml
-------	------

Root Canal Materials

i-EDTA

ROOT CANAL PREPARATION GEL



Packaging:

IEDTP	5g syringe
	3 tips
IEDCP	9g syringe
	5 tips

Indications:

- For cleaning
- For lubricating
- For irrigating

Advantages:

- Helps in mechanical as well as chemical cleansing of root canal preparations
- EDTA helps in chelating the calcium salts
- Gel helps lubricate endodontic instrument and makes penetration easier
- Carbamide peroxide in EDTA promotes internal bleaching on irrigation with hypochlorite solution

i-EDTA

ROOT CANAL PREPARATION SOLUTION



Packaging:

IEDLP	50ml
-------	------

Indications:

- For cleaning
- For lubricating
- For irrigating
- Helps decalcify dentin in the canal wall

Advantages:

- 17% solution and neutral pH cleanses root canals rapidly
- Helpful in enlarging of canals
- Opens calcified canals

Root Canal Materials

Citric Acid

CITRIC ACID SOLUTION, 40%

Indications:

- For cleaning of root canal
- Recommended as a cleanser of prepared root canals

Advantages:

- Enhances the mechanical cleaning of the tooth canal
- Removes the sticky layer from the walls of root exposing the root canal dentin
- Enables precise cleaning and filling of the canals



Packaging:

CH090	200ml
-------	-------

i-TIPS

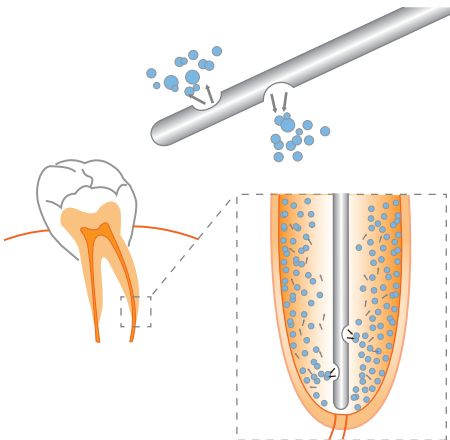
NEEDLES TIPS FOR ROOT CANAL IRRIGATION

Advantages:

- Round blunt needle end
- Better canal irrigation

Packaging:

IT01	20 needles tips
------	-----------------



Root Canal Materials

i-CLEAN

SOLUTION FOR CLEANING, DEGREASING, DRYING PREPARED AND INTACT SURFACES OF TEETH AND DISINFECTION



Advantages:

- Solution does not contain additives which could affect other materials being utilized (i.e. composites)
- Exclusively contains fast-evaporating solvents with good fat-dissolving and water absorption properties and has disinfecting effect

Indications:

- Cleans, degreases and dries prepared and intact surfaces of teeth in preparation for further conservative, prosthetic or orthodontic treatment requiring dry surfaces
- For cleaning and drying of cavities before applying filling materials; after preparation and disinfection of root canals (for drying)
- For cleaning and drying of prosthetic preparations before luting
- For cleaning and/or drying of all restorations before luting

Packaging:

CH070 50ml

Zinc Oxide

ZINC OXIDE POWDER



Packaging:

CH100 50g

Indications:

- For dental fillings in combination with Eugenol solution

Advantages:

- Have good antibacterial properties
- Accelerate wound healing

Calcium Hydroxide

CALCIUM HYDROXIDE POWDER



Packaging:

CH060 50g

Root Canal Materials

Eugenol

EUGENOL LIQUID

Indications:

- In combination with zinc oxide could be used for temporary dental fillings and as a base under restorative materials and cements that do not contain resin components

Advantages:

- Strong antiseptic
- Analgetic
- Has anti-inflammatory effect



Packaging:

CH080	10ml, bottle with dropper
CH081	50ml, bottle with dropper

Sodium Hypochlorite

SODIUM (NATRIUM) HYPOCHLORITE SOLUTION 2,5%, 5%

Indications:

- For disinfection of root canal
- To irrigate canal after filling with appropriate chelating agent

Advantages:

- Irrigates root canal
- Helps debride root canal
- Disinfects root canal during instrumentation



Packaging:

ISHTP	100ml, 2.5%
ISHCP	100ml, 5%

Temporary Materials

i-PRO

TEMPORARY FILLING MATERIAL



Packaging:

IPRTP	50g paste soft
IPMTP	50g paste medium
IPNTP	50g paste hard
IPFTP	50g paste medium, with fluoride
IPNFP	50g paste hard, with fluoride

Indications:

- All temporary fillings
- Temporary fixing of post crowns

Advantages:

- High adhesion
- Non sticky
- Radiopaque
- High strength and hardness
- Easily packable
- Different hardness after setting
- Eugenol free

i-PRO LC

LIGHT CURING TEMPORARY FILLING MATERIAL



Packaging:

IPLTP	8g syringe shade red
-------	----------------------

Indications:

- All temporary fillings

Advantages:

- Quick curing
- High adhesion
- High strength and hardness

i-DEVIT

PASTE FOR DEVITALISATION

Indications:

- Ideal for pulp devitalisation prior to mortal extirpation or amputation
- Residual devitalisation after removal of non-vital pulp tissue

Advantages:

- Antibacterial
- Disinfectional
- Proven in cases of pulp inflammation
- Arsenic-free
- Quick pain killing

Packaging:

IDVTP	3g syringe
-------	------------



Etchants

i-GEL

PHOSPHORIC ACID ETCHING GEL AND LIQUID

Indications:

- For etching teeth and preparing surfaces

Advantages:

- Thixotropic
- Optimum level of viscosity
- 37% phosphoric acid



Packaging:

GEL TYPE:

IGECP	4,3g syringe, shade blue 5 tips
IGEK1	4x4,3g syringes, shade blue 20 tips
IGE12B	12g syringe, shade blue 10 tips
IGE50B	42g syringe, shade blue 2x4,3g syringes, shade blue 20 tips 1 connector

LIQUID TYPE:

IGEGL	5ml bottle, shade green
IGEGC	10ml bottle, shade green



Fluoride Solution

SOLUTION FOR PREVENTION OF DENTAL CARIES AND
HYPERSENSITIVITY



Indications:

- Prophylaxis of dental caries
- Treatment of hypersensitive dentine

Advantages:

- 1% sodium fluoride contents

Packaging:

CH030	20ml
-------	------

i-FLOR

SUSTAINED RELEASE FLUORIDE GEL



Indications:

- For home fluoridation
- For treating tooth sensitivity

Advantages:

- Simple to use
- Minimally invasive treatment
- Ideal consistency
- Low fluoride contents

Packaging:

IFLCP	3,9g syringe
-------	--------------

Prophy Materials

i-FASTE

PROPHY PASTE

Indications:

- For prophylaxis
- For polishing
- For removal of dental plaque

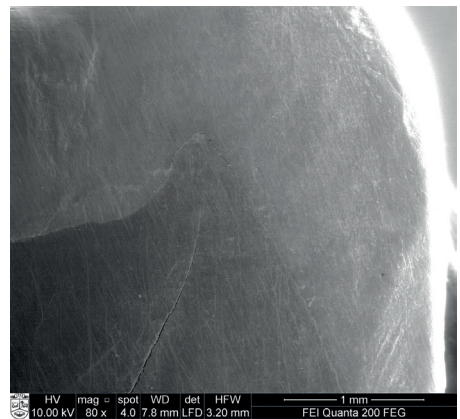
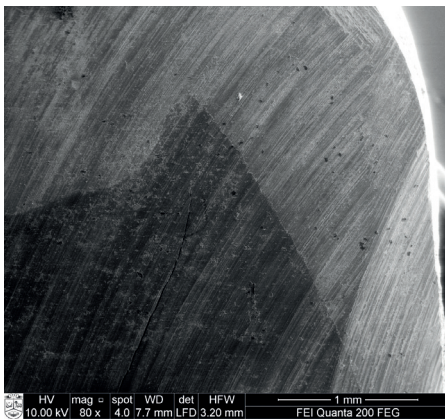
Advantages:

- Simple to use
- Fresh taste
- With or without fluoride

Packaging:

IFCTP	30g paste coarse, mentol, shade green*
IFC100	100g paste coarse, mentol, shade green*
IFMTP	30g paste medium, orange, shade orange*
IFM100	100g paste medium, orange, shade orange*
IFFTP	30g paste fine, apple, shade green-yellow

*Also possible with fluoride



Tooth surface before polishing

Tooth surface after polishing i-FASTE medium

Prophy Materials

Brushes and Cups

PROPHY BRUSHES AND PROPHY CUPS



Packaging:

IB01	10 junior cups RA white bristle
IB02	10 junior cups RA nylon
IB03	10 prophy cups RA rubber webbed

i-TOPICAL

TOPICAL ANESTHETIC GEL



Indications:

- For use on oral mucosa prior to local anesthetic injections, scaling and prophylaxis
- Useful to relieve discomfort associated with taking impressions and intra-oral radiographs

Advantages:

- Flavored 20% benzocaine gel
- Fast and effective



Packaging:

ITO01	4x3g syringes, cherry
ITO02	30g jar, cherry

Retraction Materials

Hemostatic Solution

GINGIVAL RETRACTION SOLUTION BASED ON ALUMINIUM CHLORIDE 25%

Indications:

- For gingival retraction
- To stop minor gingival bleeding

Recommended to arrest bleeding during:

- Restorative procedures
- Crown preparations
- Before impression taking
- Placing fillings
- Cementing inlays or crowns
- Curettage
- Deep scaling
- Also after minor surgery



Advantages:

- Aluminium chloride has an astringent effect
- Unsurpassed kindness to hard and soft tissue
- Eliminates sulcular fluid contamination for optimal bonding
- Easily absorbed by retraction cords and braids
- Non staining unlike ferric sulphate which stains porcelain veneers and crowns
- Contains no epinephrine to help avoid cardiac reactions

Packaging:

CH020 20ml



Retraction Materials

i-PAK Ultra

KNITTED RETRACTION CORD

Indications:

- For gingival displacement before bonding and/or restorative placement procedures
- For use to aid in making impressions for fixed prosthetics
- Use them when bonding veneers
- The smaller sizes are beneficial when working with delicate tissues



Advantages:

- Cord is made of 100% cotton
- Knitted into thousands of tiny loops forming long interlocking chains
- The unique knitted design exerts a gentle continuous outward force following placement as knitted loops seek to open
- Easy to control and place
- Will not tangle in burs or packers
- When using i-PAK UTRA plain knitted cords, since they carry significantly greater quantities of hemostatic solution than conventional cords

Packaging:

IPU01	Knitted retraction cord №0, 244cm
IPU02	Knitted retraction cord №00, 244cm
IPU03	Knitted retraction cord №000, 244cm

Retraction Materials



1 picture. Prepack - The thin cord Packer quickly slips it into position. The knitted cord's unique design (interlocking loops) facilitates easy packing and locks it into place

Can be used for:

#000

- Anterior teeth
- Double packing
- Substitute for black silk suture as lower cord in the "two-cord" technique

#00

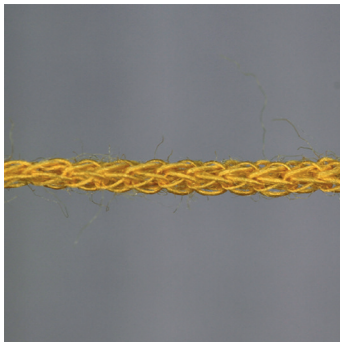
- Preparing and cementing veneers
- Restorative procedures dealing with thin, friable tissues

#0

- Lower anteriors
- When luting near gingival and subgingival veneers
- Class III, IV and V restorations



2 picture. Preparation - Extend margin subgingivally by cutting partway into knitted cord. A small portion of uncut tooth above the gingival attachment is preserved to record in the impression



3 picture. Microscopic compressible loops of knitted cord afford greater interthread space than the braided cord. Upon packing, loops compress which expresses hemostatic astringent to underlying tissues. A knitted cord is like a chain; it bends and stays put when packed into place


* Images made by © Dr. Meldas Mažeika

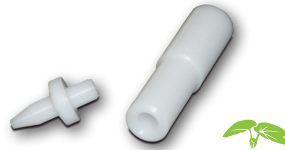
i-OIL

HANDPIECE LUBRICANT SPRAY



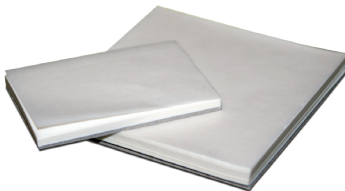
Packaging:

IHSCP	500ml
IHACP	Special nozzle for handpieces 



Mixing Pads

MIXING PADS



Packaging:

IB04	4x6cm, 50 sheets
IB041	7,5x7,5cm, 100 sheets

Cotton Rolls

COTTON ROLLS



Packaging:

IB061	№.1, 1000pcs, 400g
IB062	№.2, 1000pcs, 450g

Miscellaneous

Disposable Micro Applicators

DISPOSABLE MICRO APPLICATORS

Indications:

- Ideal for application of sealants, bonding agents, etchants, different solutions, cavity liners

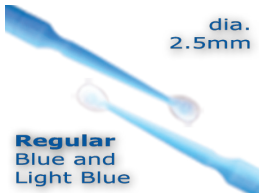
Advantages:

- Hygienic dispensing
- Bends into any angle for the placement of small controlled amounts of material in limited access areas
- Multiple applicator colors are available to identify different materials during a procedure
- Three precise head sizes, Regular (2.5mm), Fine (2.00mm) and Ultrafine (1.5mm)



Packaging:

IB05R	Regular size, colors: blue and light blue (100 pcs.)
IB05F	Fine size, colors: green and light green (100 pcs.)
IB05U	Ultrafine size, colors: lavender and light lavender (100 pcs.)



Tooth Whitening

i-SMILE

TOOTH WHITENING GEL BASED ON CARBAMIDE PEROXIDE



Indications:

- For home bleaching of vital teeth
- For home bleaching of non-vital teeth
- For home bleaching of discolored teeth

Advantages:

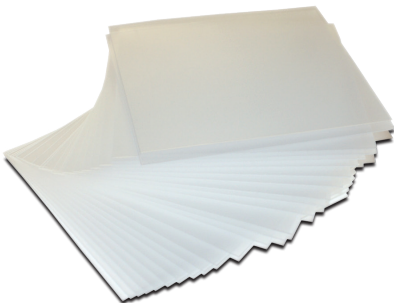
- Simple to use
- Minimally invasive treatment
- Ideal consistency
- With or without fluoride

Packaging:

ISMFC	3,3g syringe 10% carbamide peroxide, with fluoride, orange
ISMK1	4x3,3g syringe 10% carbamide peroxide, with fluoride, orange
ISNFC	3,3g syringe 16% carbamide peroxide, with fluoride, apple
ISNK1	4x3,3g syringe 16% carbamide peroxide, with fluoride, apple

Vinyl Sheets

VINYL SHEETS



Indications:

- For fabrication of bleaching trays
- For fabrication of brushing trays

Advantages:

- Simple to use

Packaging:

ISTTP	1mm, 25pcs
-------	------------

Tooth Whitening

i-BLOCK

LIGHT CURING LIQUID COFFERDAM AND BLOCK OUT MODEL RESIN

Indications:

- For isolation of gingival tissues in cases where there is a risk of irritation by contact with products used in the clinical procedure (i.e. office whitening procedure)
- To help with the complete isolation for a better sealing of a cavity preparation or endodontic treatment
- For creating reservoir space for bleaching trays
- For stone model repairs
- Other laboratory procedures



Advantages:

- The product is sufficiently viscous and allows easy application and control over the place to be protected
- Excellent adhesion on the gingiva
- High adhesion isolation
- Easily removed
- No gingival tissue irritation
- Blue shade

Packaging:

IBOTP	3,8g syringe + 3 tips
IBOK1	4x3,8g syringes + 12 tips



* Images made by © Dr. Meldas Mažeika

Acrylics: dentures

i-PLAST HC

HEAT CURING ACRYLIC RESIN FOR DENTURES BASES



Indications:

- For fabrication of full dentures
- For fabrication of partial dentures
- For repairs

Advantages:

- Cadmium free
- Quick curing

Packaging:

IAHK1	300g powder + 150ml liquid
IAHTP	300g powder pink veined
IAHTL	150ml liquid

i-PLAST CC

SELF CURING ACRYLIC RESIN FOR REPAIRS



Indications:

- For repairs of full dentures
- For repairs of partial dentures

Advantages:

- Cadmium free
- Quick curing

Packaging:

IACK1	300g powder + 150ml liquid
IACTP	300g powder pink veined
IACTL	150ml liquid

i-PLAST CA

SELF CURING ACRYLIC RESIN FOR DENTURES CASTING SYSTEMS

Indications:

- For fabrication of full dentures
- For fabrication of partial dentures
- For repairs of full dentures
- For repairs of partial dentures

Advantages:

- Cadmium free
- Color stability
- Quick curing

Packaging:

IAAK1	300g powder + 150ml liquid
IAATP	300g powder pink veined
IAATL	150ml liquid

i-PLAST OR

SELF CURING ORTHODONTIC ACRYLIC RESIN

Indications:

- For fabrication of orthodontics appliances
- For repairs of orthodontics appliances

Advantages:

- Cadmium free
- Spray-on technique
- Quick curing

Packaging:

IAOK1	300g powder + 150ml liquid
IAOTP	300g powder clear
IAOLC	150ml liquid clear
IAOLP	150ml liquid pink

Other shades under request



i-PLAST IM

SELF CURING ACRYLIC RESIN FOR INDIVIDUAL TRAYS

Indications:

- For making individual impression trays

Advantages:

- Cadmium free
- Yellow shade
- Quick curing

Packaging:

IAIK1	300g powder + 150ml liquid
IAITP	300g powder
IAITL	150ml liquid



Isolating Solution For Models

ISOLATING SOLUTION FOR MODELS



Indications:

- Thin, silicone based isolating agent
- Specially developed for wax-dipping techniques

Advantages:

- Microfilm isolates plaster from wax or porcelain
- A thin layer is effective for days; no reapplication required
- Isolates the plaster, acrylic and metal surfaces to permit wax application

Packaging:

IL08	50ml
------	------

i-SEP

SEPARATING SOLUTION FOR PLASTER



Indications:

- For separating plaster from denture material
- For separating plaster from plaster

Advantages:

- Simple to use
- Alginate based

Packaging:

ISERT	500ml liquid red
ISERC	1000ml liquid red
ISEOT	500ml liquid orange
ISEOC	1000ml liquid orange
ISEBT	500ml liquid blue
ISEBC	1000ml liquid blue

i-CAB

ACRYLIC RESIN FOR PRODUCTION CROWNS AND BRIDGES

Indications:

- For production permanent crowns
- For production permanent bridges

Advantages:

- High aesthetic
- VITA* shades
- High strength and hardness
- Heat cure

* Registered trademark of the Vita Zahnfabrik H.Rauter GmbH & Co.KG, Bad Sackingen, Germany



Packaging:

ICAA1	100g powder A1
ICAA2	100g powder A2
ICAA3	100g powder A3
ICAA5	100g powder A3.5
ICAB2	100g powder B2
ICAC2	100g powder C2
ICACL	50ml liquid

i-RED

SELF CURING ACRYLIC PATTERN RESIN

Indications:

- For production secondary constructions
- For fixations

Advantages:

- Self curing
- Burn out
- No shrinkage



Packaging:

IREKP	15g powder red
IREDP	100g powder red
IREKL	10ml liquid
IREDL	50ml liquid

ACRYLIC RESIN FOR PRODUCTION TEMPORARY CROWNS AND BRIDGES

Indications:

- For production temporary crowns
- For production temporary bridges

Advantages:

- High aesthetic
- VITA* shades
- High strength and hardness
- Self cure

* Registered trademark of the Vita Zahnfabrik H.Rauter GmbH & Co.KG, Bad Sackingen, Germany



Packaging:

ITEA2	100g powder A2
ITEA3	100g powder A3
ITECL	50ml liquid

Other shades under request

Pumice

DENTAL GRADE PUMICE FOR DENTURES POLISHING



Packaging:

IPETP	5000g
IPECP	25000g

Acrylic Teeth

i-DENT

ACRYLIC TEETH

Indications:

- For production permanent dentures
- For production temporary dentures

Advantages:

- Two layers
- High aesthetic
- VITA* shades
- High strength and hardness

* Registered trademark of the Vita Zahnfabrik H.Rauter GmbH & Co.KG, Bad Sackingen, Germany



Packaging:

IDEK1	5 sets (140 teeth)
IDEK2	10 sets (280 teeth)



i-STONE II

SYNTHETIC DENTAL PLASTER TYPE II

Physical data:

- Setting expansion max 0,3%
- Compressive strength min 9 N/mm²

Packaging:

IS2TP	5000g white
IS2CP	25000g white



i-STONE ORTO

SYNTHETIC HARD DENTAL PLASTER FOR
ORTHODONTICS TYPE III

Advantages:

- Balanced expansion
- Consistant quality

Physical data:

- Setting expansion max 0,2%
- Compressive strength min 20 N/mm²
- Hardness after 24h min 70 N/mm²

Packaging:

IS3OT	5000g extra white
IS3OP	25000g extra white

i-STONE III

SYNTHETIC HARD DENTAL PLASTER TYPE III

Packaging:

IS3TP	5000g yellow, green, blue
IS3CP	25000g yellow, green, blue

Physical data:

- Setting expansion max 0,2%
- Compressive strength min 30 N/mm²
- Hardness after 24h min 80 N/mm²

Plasters

i-STONE IV

SYNTHETIC EXTRA-HARD DENTAL PLASTER TYPE IV

Physical data:

- Setting expansion max 0,1%
- Compressive strength min 50 N/mm²
- Hardness after 24h min 150 N/mm²

Packaging:

IS4TP	5000g brown
IS4CP	25000g brown



i-STONE EXTRA

SYNTHETIC EXTRA-HARD AND EXTRA-FINE DENTAL PLASTER TYPE IV

Physical data:

- Setting expansion max 0,1%
- Compressive strength min 60 N/mm²
- Hardness after 24h min 250 N/mm²

Packaging:

IS4EP	5000g yellow-brown
IS4EC	25000g yellow-brown

i-STONE ROCK

SYNTHETIC SUPER-HARD DENTAL PLASTER TYPE IV

Indications:

- For the manufacture of stumps, tooth bands and models in the technique of precious metals and ceramics

Packaging:

IS4RP	5000g yellow-brown
IS4RC	25000g yellow-brown

Advantages:

- High stability
- Have very smooth surfaces
- Fast final hardness
- Scratch resistant
- Show high precision
- Thixotropic consistency
- Quick separating from mould

Physical data:

- Setting expansion max 0,2%
- Compressive strength min 60 N/mm²
- Hardness after 24h min 250 N/mm²

Investments

i-VEST E

INVESTMENT FOR CROWN AND BRIDGES FOR ALL ALLOYS



Indications:

- For model casting system – framework

Packaging:

IVECP	5000g powder
IVEPP	40x160g powder
IVEEP	25000g powder
IVNLP	500ml liquid

i-VEST N

PHOSPHATE INVESTMENT FOR CHROME-COBALTS ALLOYS



Indications:

- For model casting system – framework

Packaging:

IVNCP	5000g powder
IVNPP	40x160g powder
IVNEP	25000g powder
IVNLP	500ml liquid

i-dental Innovative
Dental Products
www.i-dental.lt

UAB "Medicinos linija"

Address:

Karaliauciaus str. 29
Siauliai LT-78374
Lithuania

Phone:

+370 41 553 553

Fax:

+370 41 553 551

E-mail:

dental@i-dental.lt